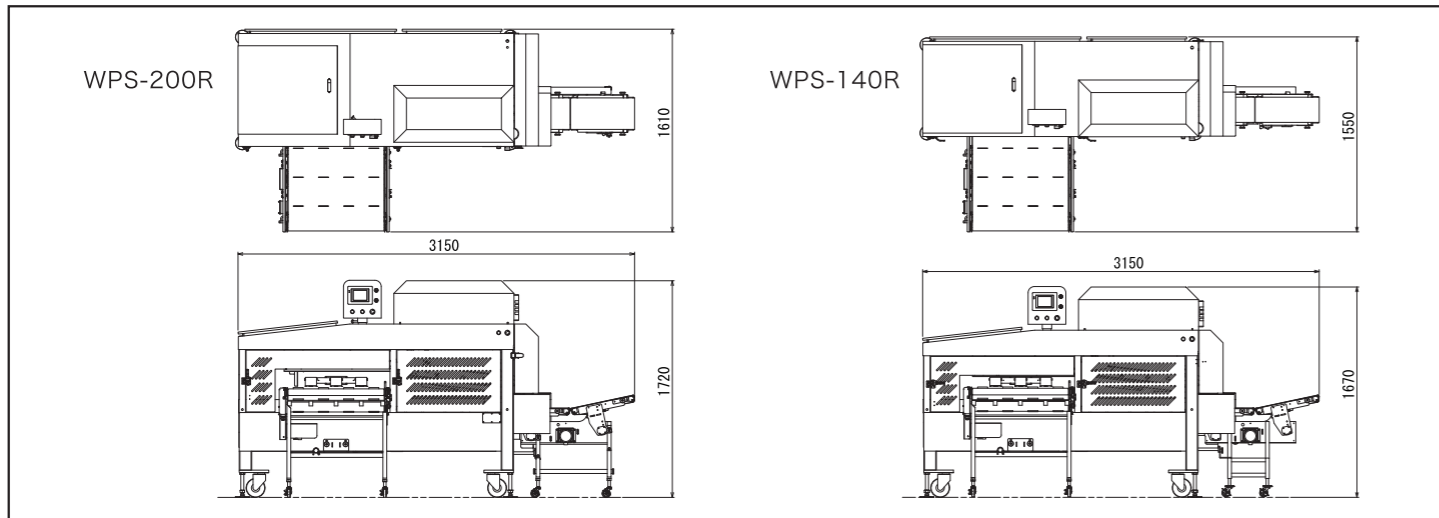


D.S.S(Double Stealth System)

2 WPS-140R can process more than double valued with the continuous.

Picture above is only an image, line specifications and process amount will depend on products and the line.

■DRAWING Please refer to the drawing for further information.



■SPECIFICATION

| Model | WPS-200R | WPS-140R |
|-------------------------------|---|---|
| Dimension | W3150×D1610×H1720mm | W3150×D1550×H1670mm |
| Portioning | 20g~450g | 20g~450g |
| Process amount (Chilled mode) | Pork slice: 2,500~3,000 slices/h Beef steak: 1,800~2,000 slices/h (Depends on material size and set weight) | Pork slice: 2,500~3,000 slices/h (Depends on material size and set weight) |
| Slice temperature | -3~+3°C (Depends on product) | -3~+3°C (Depends on product) |
| Rating electricity | Inlet 2.29kW Rating electric current 15A | Inlet 2.29kW Rating electric current 15A |
| Rating power consumption | 0.29kW (50/60Hz with no overloaded) | 0.29kW (50/60Hz with no overloaded) |
| Power supply | 3P 200V 50/60Hz more than 20A | 3P 200V 50/60Hz more than 20A |
| Compressor | 0.5MPa·120L/min | 0.5MPa·120L/min |
| Compressed air connection | JSL-02 (Joplax) | JSL-02 (Joplax) |

WATANABE
WATANABE FOODMACH CO.,LTD.

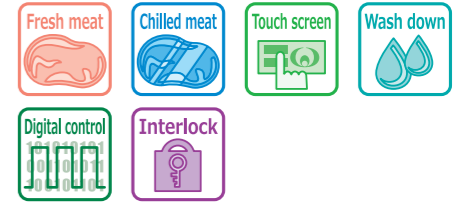
2-12-26 TSUYUHASHI NAKAGAWA-KU NAGOYA JAPAN
TEL052-361-8511 FAX052-361-8490
URL: <http://www.foodmach.co.jp/>

SALES AGENT

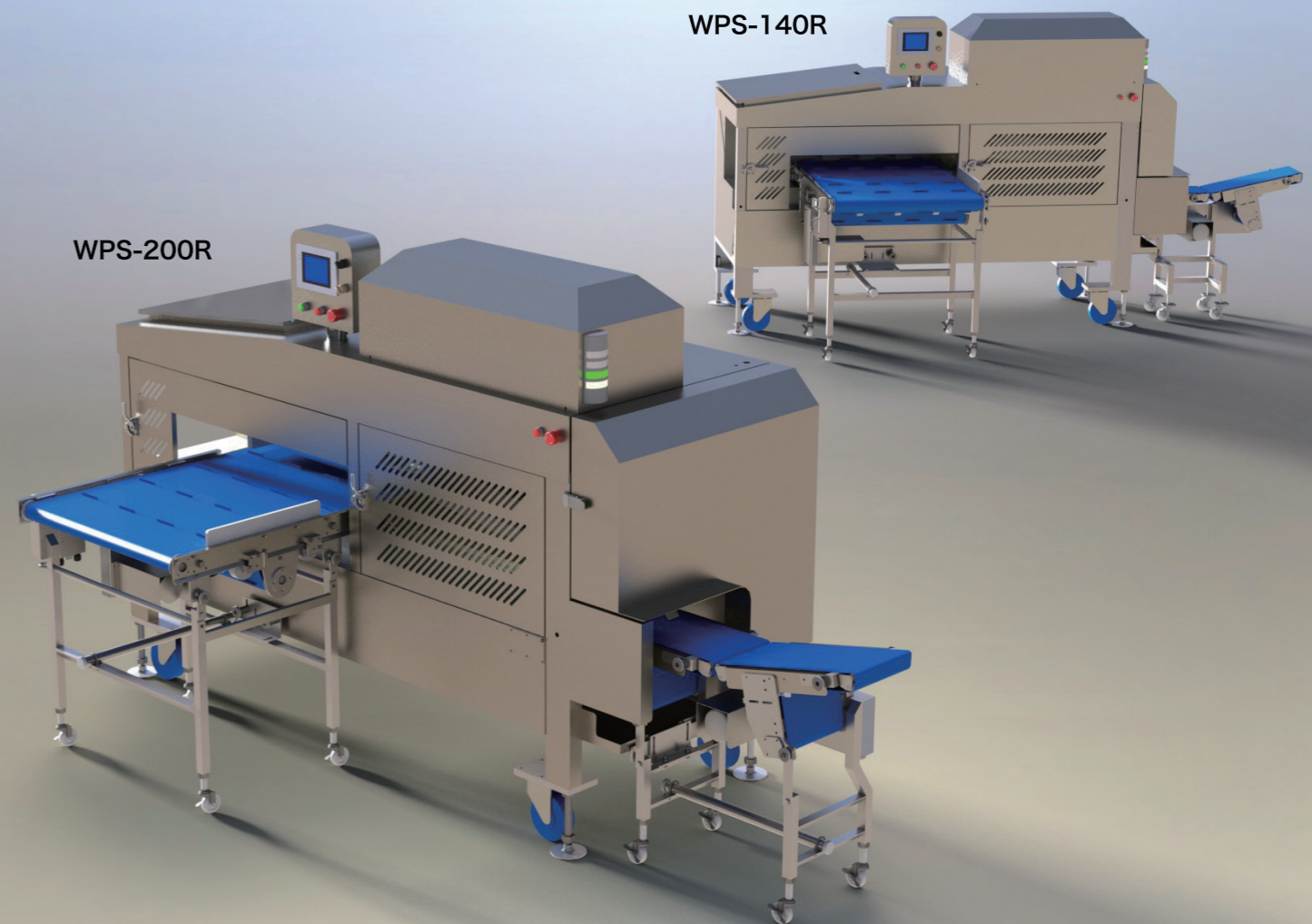
WATANABE

STEALTH

WPS-200R/140R



Weight counting slice. Portioning slicer especially for pork loin slice.



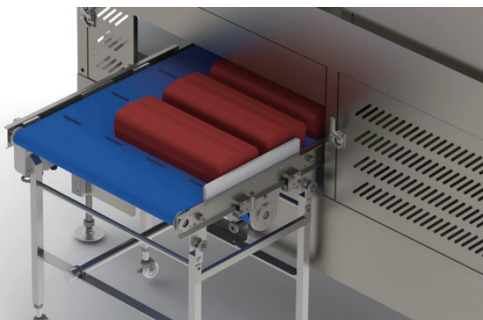
Simple control

The touch screen setting is only to set the weight. No mold change for setting portioning weights. (e.g. 80g, 95g, 103g, 122g)



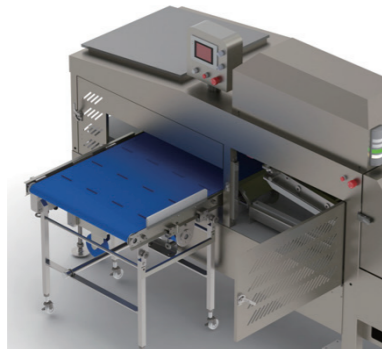
Non-stop slice mode

After setting the weight, only pushing start switch is needed. Then you can continue to feed the product for the continuous slice operation.

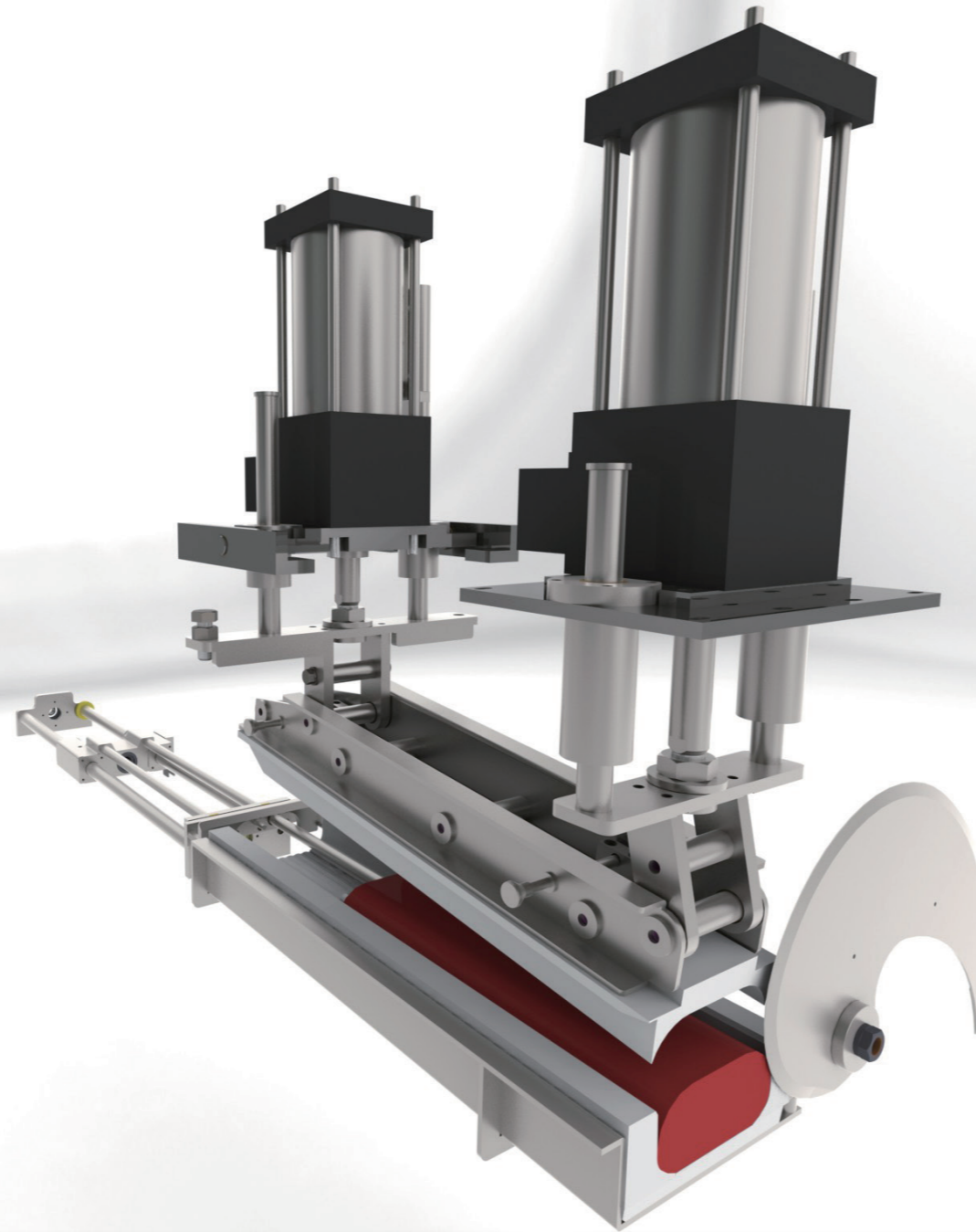


Safety

Interlock systems are used for all covers. Reminders from the interlock system can be checked by a touch panel for your safety.

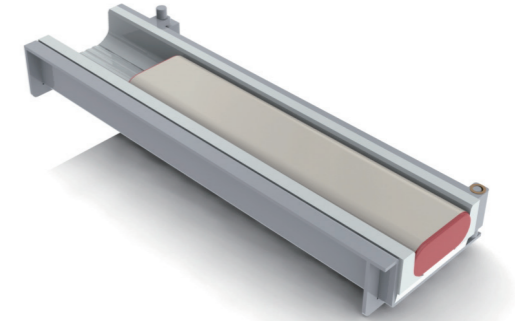


More accurate portioning control than ever!

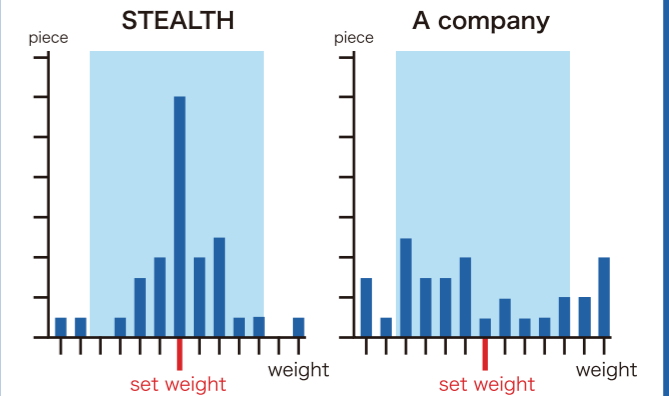


Newly invented weight control system

The mold is with Watanabe special new press system. Meats fit perfectly. This gives the accurate weight control.



Weight histogram



Watanabe Stealth can process with the accurate weight.

*This histogram is data from the slice test.

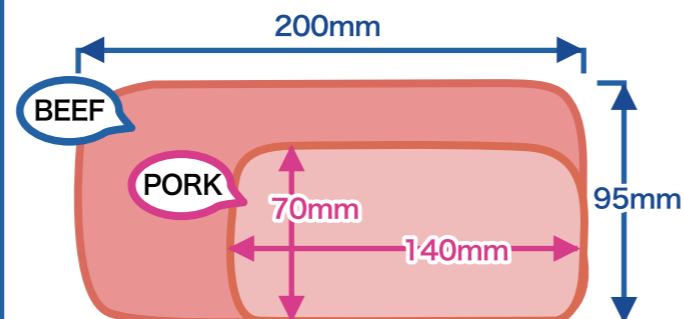
Weight histogram

Watanabe Stealth can process with the accurate weight. This histogram is data from the slice test.



Even pork loin and beef steak

WPS-140R is suitable to slicing pork loin, WPS-200R is for slicing beef steak.



HYGIENE

No tool is needed for removing parts. The mold is easy to remove/assemble with the special lift. Removed parts can be stocked on the special shelf. The control screen navigates the way to remove parts for cleaning up the machine and re-assemble.

